



PERIPHERAL PUMPS



Peripheral pumps with axial intake and upward-facing radial delivery. The main feature of these pumps is that they are capable of generating a medium-high discharge head with a relatively modest power consumption. These pumps are particularly suited for pumping up and distributing water in domestic water supply systems in houses, villas, small properties, and gardens, as well as for providing water supply to high pressure water heating systems. It is recommended that these pumps are used to carry only chemically pure liquids and free of foreign matters, with temperature not higher than 80°C.

WORKING DATA

- Max delivery: 60 l/min (3,6 m³/h)
- Max head: 64 meters
- Rotation speed 2850 r.p.m.
- Continuous service.
- Maximum suction: 7 meters

APPLICATION

- Provide potable water.
- Water heating system.
- Provide small industrial iron
- Provide small home pressure installation.

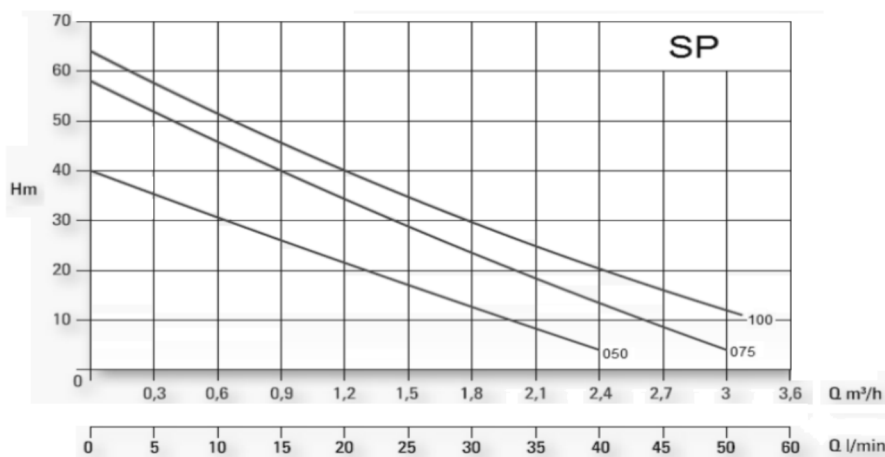
PUMP FEATURES

- G 20 cast iron pump body
- Stainless steel shaft
- Mechanical seal in ceram./graph.
- Brass impeller

ENGINE FEATURES

- Electric, closed-type with external cooling fan
- Safety class IP 44
- Class of insulation F
- Single phase motors 220-230 V - 50 Hz; fitted with motor-protector to avoid damages to the motor.
- Three-phase to 230/400 V - 50Hz; Protection must be provided by user.

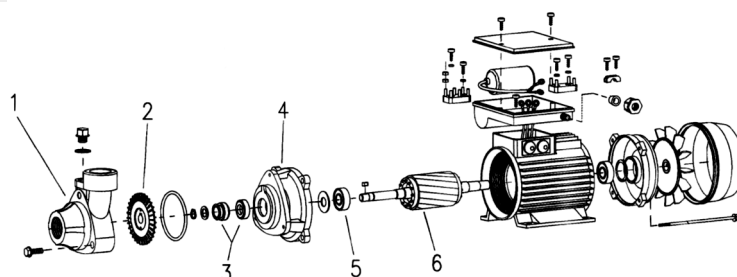
CURVE AND TECHNICAL DATA



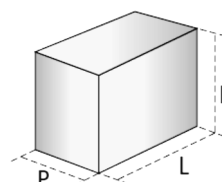
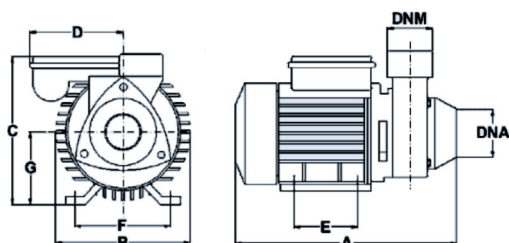
Model		Nominal power		A single-phase		A Three-phases		Quantity											
1~230/240 50 Hz	3~230/400 50 Hz	HP	kW	230 V	µF	230 V	400 V	Total head											
								H (m)											
SP050	SP050T	0.50	0.37	2.5	10	1.9	1	0	0.3	0.6	0.9	1.2	1.5	1.8	2.1	2.4	2.7	3	3.6
SP075	SP075T	0.75	0.55	5.2	16	3.2	1.8	0	5	10	15	20	25	30	35	40	45	50	60
SP100	SP100T	1.10	0.75	5.6	20	4.1	2.4	40	35	32	27.5	23	18	13	4				
								58	52	45	40	35	30	25	14	4			
								64	58	54	46	40	35	29	20	11	3		

COMPONENTS

Pos.	Component	Material
1	Pump Body	Cast Iron G20
2	Impeller	Brass
3	Mech. Seal	Ceram/Graph.
4	Motor Bracket	Cast Iron G20
5	Bearing	AISI 316
6	Shaft	AISI416



DIMENSIONS



Model	Pump Dimension in mm									Packing in mm			Weight kg
	A	B	C	D	E	F	G	DNA	DNM	L	H	P	
SP050	250	120	155	76	80	100	63	1"	1"	290	165	145	5.8
SP075	294	135	173	86	90	112	71	1"	1"	310	215	175	9.2
SP100	294	135	173	86	90	112	71	1"	1"	310	215	175	9.5